

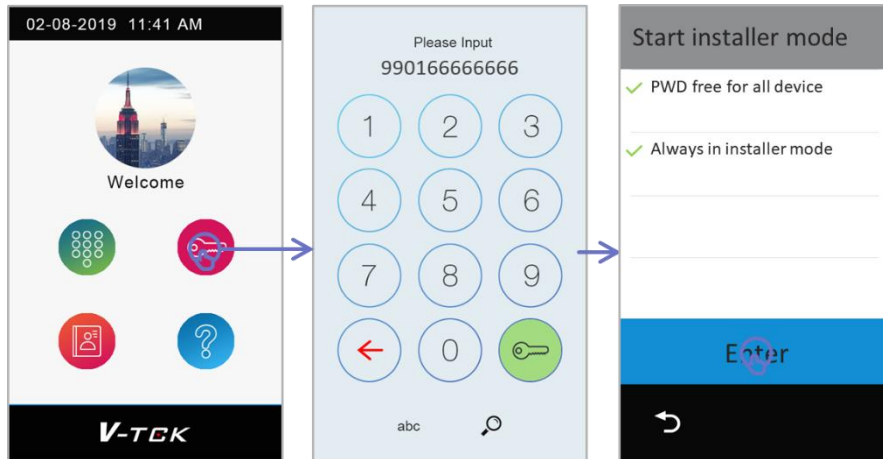
Installer Configuration

Before configure, all device should be connected.

IX850 Installer Mode

To configure IX850 installer need to set IX850 in installer mode.

when IX850 in standby, tap "Unlock" -> input "9901 + installer password" (by default, installer password is 66666666, input 990166666666)



PWD free for all device:

All other devices with same installer password will not require to input password when it is enabled

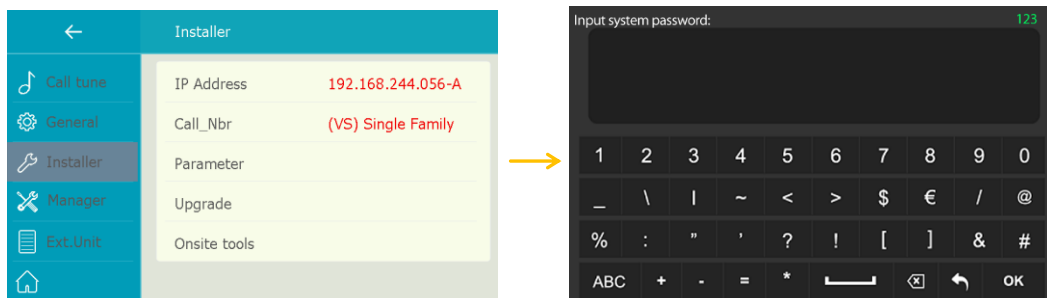
Always in installer mode

Keep in "Installer mode" unless manually exit or power down. Without selected, IX850 will exit "Installer Mode" after 1 hour.

After tap "Enter" to set door station into "Installer Mode"

IX471 Installer Password

When setting up monitor's installer settings, if without password-free monitor will require a installer password, default password is 66666666



1. IP address

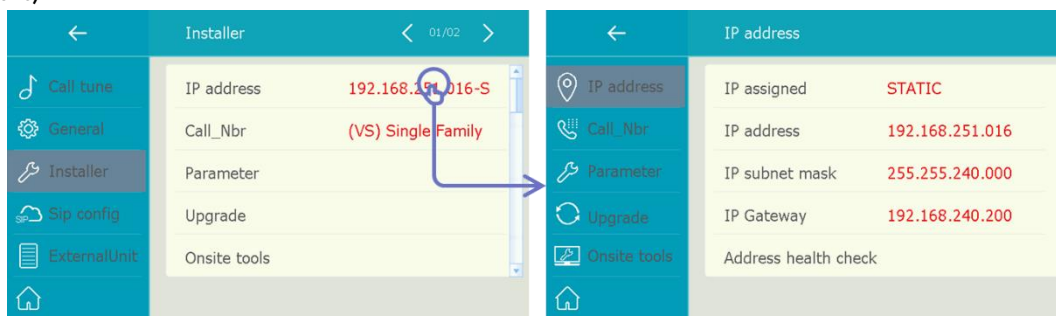
According to different project requires, installer should set up IP address correctly.

With less than 256 devices, installer could also use “Auto-IP” to skip IP address settings.

Auto-IP: Each device will assign itself a unique IP address in appoint subnet work. (IP Mask will be fix to 255.255.240.0)

Monitor IX471

On monitor, tap “Settings” -> “Installer” -> Input installer password if required (66666666 by default)



IP assigned:

- **STATIC**, Static IP address by manually input all IP address configures.
- **DHCP & Auto IP**, Using DHCP address or if there is no router for DHCP will be Auto-IP automatically.

Address health check:

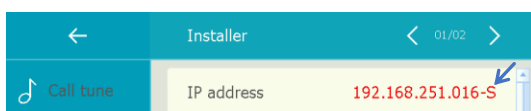
Tap to check this monitor’s configured IP address is duplicate in the network or not.

“**Error: IP exist!**”, IP address already assigned by other devices.

“**Self IP address checking passed**”, IP address is unique in the network.

Installer could also get how IP address obtain from as below:

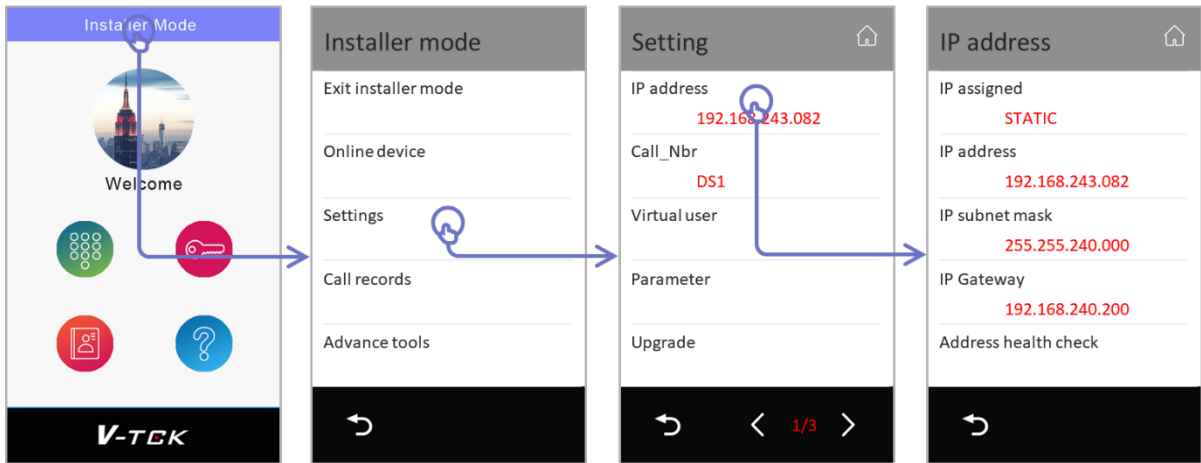
In “Installer” page, on item “IP address”, last letter of address shows:



- S**: Static IP address
- D**: Obtain from DHCP server
- A**: Assign by Auto-IP
- U**: Unlink, network error

Door Station IX850

On IX850, set into installer mode, tap in the middle of blue bar on the top of screen -> "Setting" -> "IP address"



IP assigned:

- **STATIC**, Static IP address by manually input all IP address configures.
- **DHCP & Auto IP**, Using DHCP address or if there is no router for DHCP will be Auto-IP automatically.

Address health check:

Tap to check this monitor's configured IP address is duplicate in the network or not.

"Error: IP exist!", IP address already assigned by other devices.

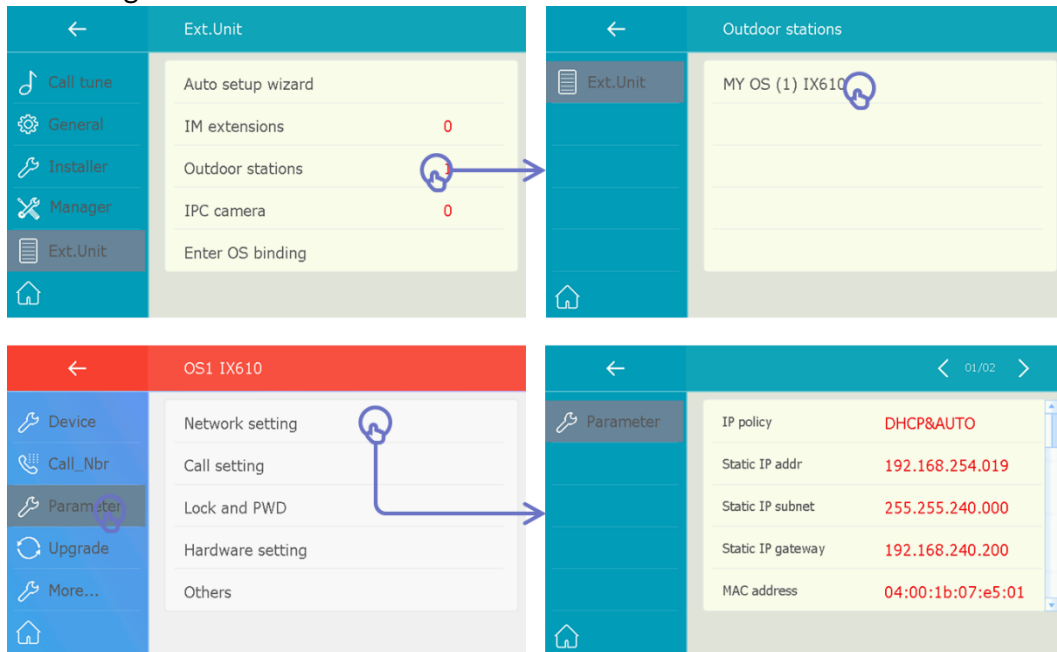
"Self IP address checking passed", IP address is unique in the network.

Door Station IX610

IX610 is set in “DHCP & Auto-IP” by default settings, installer must configure IP separately when using static IP address.

Configure via monitor remotely:

Connect separately IX610 one-to-one with IX471 (all in default settings), when in standby, on monitor tap “settings” -> “ExternalUnit” -> “OutdoorStations” -> tap “OS1” -> “Parameter” -> “Network setting”



Input parameters in “Network setting”:

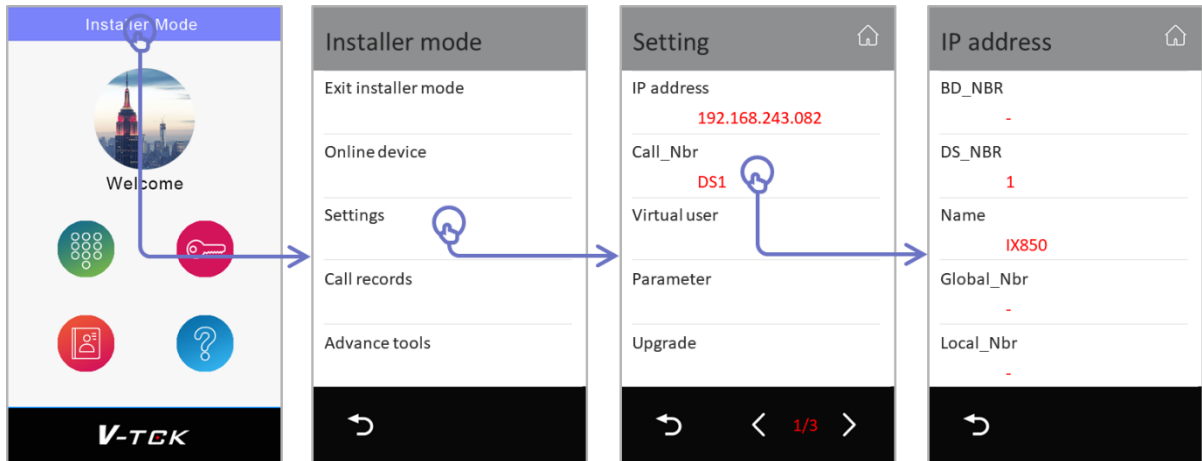
IP Address / IP Mask / IP Gateway, and change IP_DHCP enable to disable.

2. Address Setup

Installer should set up each device address accordingly to project requirements.

Door Station IX850

In “Installer Mode” (Unlock with code 9901 and tap in the middle of blue bar at top), tap “settings” -> “Call_Nbr”



BD_NBR:

“-”: For one building project, default BD_NBR. (input 0099 = “-”, means for standalone)

“0000”: for common door station.

“0001~8999”: for building number, 0001 means 1st building/block, 2nd means 2nd...etc.

DS_NBR:

“1~32”: door station number. 1 means 1st door station, 2 means 2nd door station...etc.

Name:

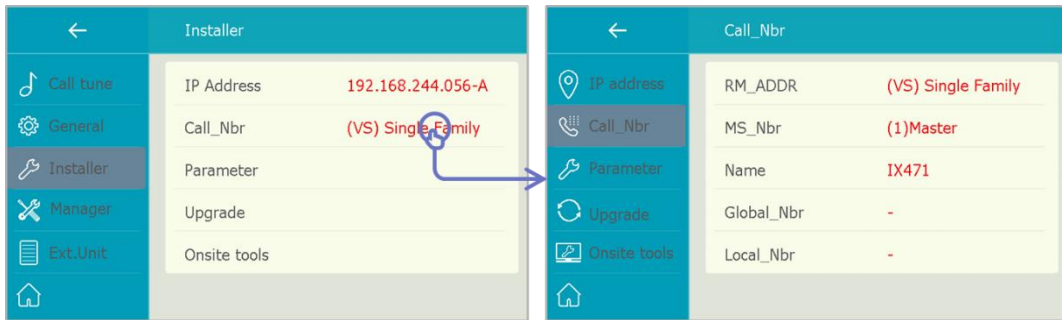
The “Name” input here will sync to monitor’s monitoring list automatically.

Global_Nbr: Reserve for Guard Unit

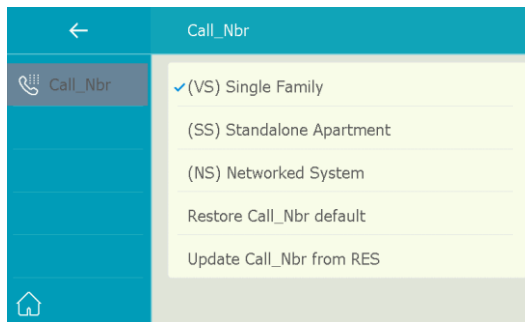
Local_Nbr: Reserve for Guard Unit

Door Station IX471

Tap “Settings” -> “Installer” -> “Call_Nbr” -> input password if required (66666666 by default)



RM_ADDR:



“(VS)Single Family”: For villa single one-to-one installation, no need to input room number.

“(SS)Standalone Apartment”: for standalone building, input 4digits room number only. Tap to input 4digits number.

Ex: Tap “(SS)” and input 0001 for room standalone building.

“(NS)Networked System”: for standalone building, input 8digits number, first 4digits for building/block number, last 4digits for room number.

EX: 00010003 1st building 3rd monitor; 00030005 3rd building 5th monitor

“Restore/Update from RES”: Reserve for configurations database file (RES file) update and backup.

MS_NBR:

Master and slave number, 01 is master monitor, 02~32 is slave monitor.

Name:

The “Name” input here will sync to door station’s calling list automatically.

Global_Nbr:

Extra call number for common door station calling to this monitor.

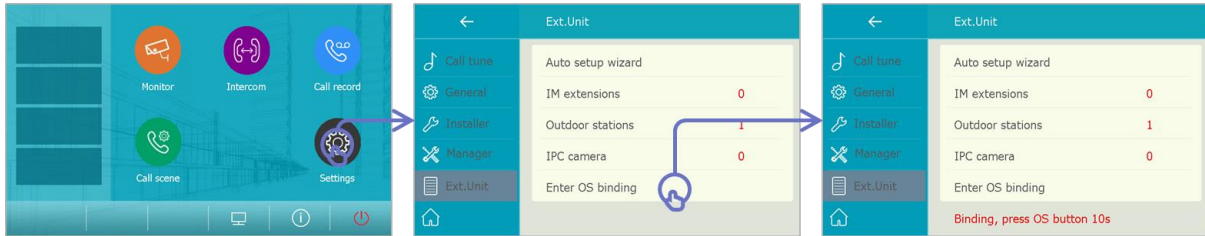
Local_Nbr:

Extra call number for door station in same building calling to this monitor

Door station IX610

For button door station IX610 to setup which monitor the call button calling to.

By default setting, IX610 call button calling to monitor address in “(VS) Single Family”.



With press and hold call button, each 5s will flash once

Hold and press call button for 10s.

Release when night light led flash twice, with one long beep means it is bind with master monitor.

On the master monitor need to be called, tap “Settings” -> “ExternalUnit” -> “Enter OS binding”, and when “**Binding, please press OS button 10s**” shows on the bottom,

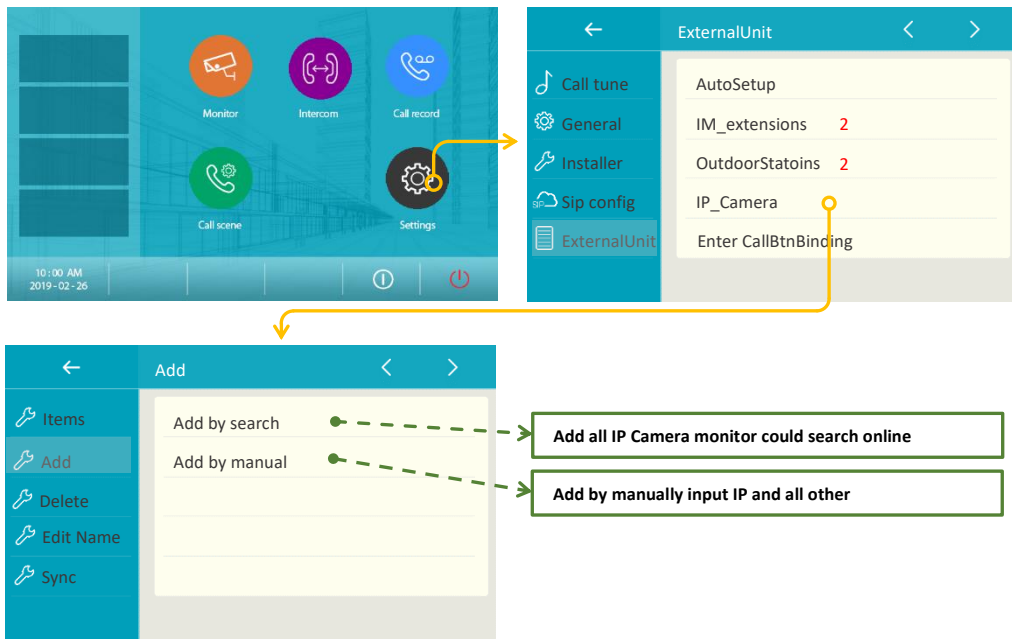
on the outdoor station need to bind, long press call button for 10s (during press, night view light will flash once each 5s), release door station reply as long beep mean is successful. Push the call button and check if monitor responds to call or not.

3. IP Camera Setup

Using IP cameras purchase from VTEC, VTEC IP camera default setting is DHCP

When camera and IX system in DHCP

On any monitor, tap “Settings” -> “ExternalUnit” -> “IP_Camera” -> “ADD” -> “Add by search”, all connected IP camera will add to monitor list.



In “IP_Camera”:

Item: Show all exist IP camera list

Add: Add IP camera by search or by manual input IP and access

Delete: Delete IP camera in current IP camera list

Edit Name: Rename IP camera locally.

Sync: Sync current IP camera list to door station so other monitors could sync IP camera list.

When camera and IX system in Static IP or Auto-IP

Install and run “Onvif Device Manager” [Download](#). Make sure PC and IP Cameras are in same subset network.

1. Getting Started

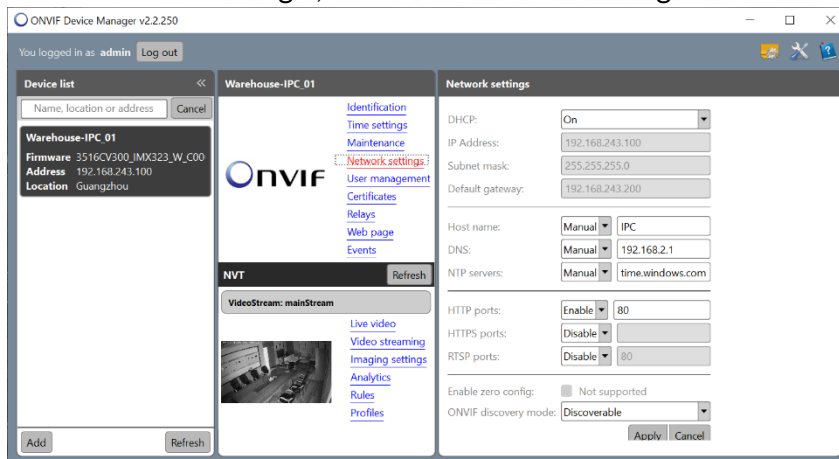
After ONVIF Device Manager has been launched, your device is automatically detected and displayed at the end of the device list on the left. If the device has not been detected automatically, check the connection and click “Refresh”.

and Input “Username” and “Password” for IP Cameras, click “Log in”.



2. Change IP Network settings

Click “Network settings”, and on the network settings



For Auto-IP please change address as follow:

IP address: 192.168.243.xxx

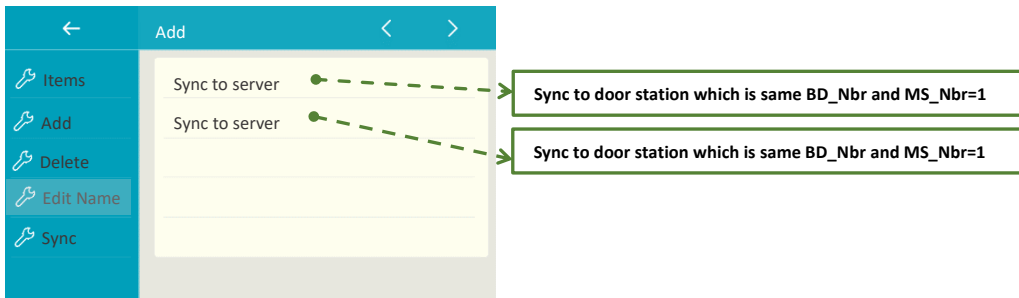
IP Mask: 255.255.240.0

Default Gateway: 192.168.243.200

For Static IP address input configures according to you need.

Sync IP camera List to Other Monitors.

For those monitors in same building use sync monitoring list so don't need to add for each one. On monitor's IP Camera.



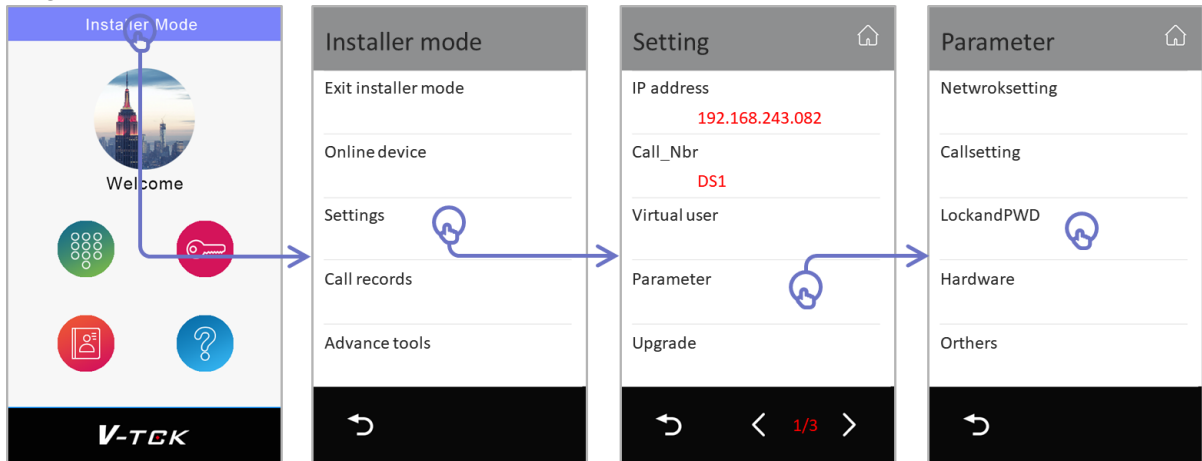
Sync to server, monitor will generate a monitoring list, and sync to door station DS1.

Sync from server, monitor will get IP camera list storage in door station DS1.

4. Unlock settings

Door Station IX850

when IX850 in “Installer mode”, tap “blue bar in the middle” -> “Settings” -> “Parameter” -> “Unlock setting”



Find below Parameters:

Lock1 mode:

Normally open or normally close for the lock release.

Lock1 unlock timing:

Unlock delay timing.

Also, below parameters, see also “2. Management – Public code”

Common unlock enable (0 or 1):

Enable or disable unlock via password.

Common unlock code (4 digits):

Public password of this door station.

Remote unlock code read (0 or 1):

Allow or disallow change public code remotely.

Remote unlock code change (0 or 1):

Allow or disallow monitor check public code.

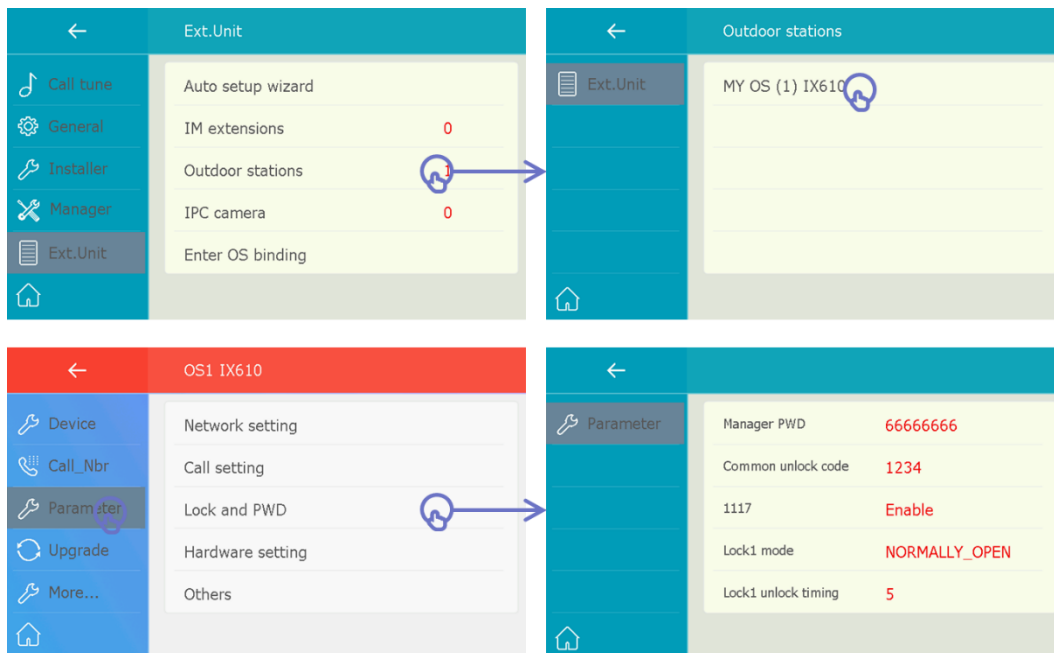
Code error protection (0 or 1):

Enable or disable error unlock code input alarm.

Other parameters are reserved

Door station IX610

On monitor which door station calling to, tap “settings” -> “ExternalUnit” -> “OutdoorStations” -> tap “OS1” -> “Parameter” -> “Lock and PWD”



Find below Parameters:

Lock1 mode:

Normally open or normally close for the lock release.

Lock1 unlock timing:

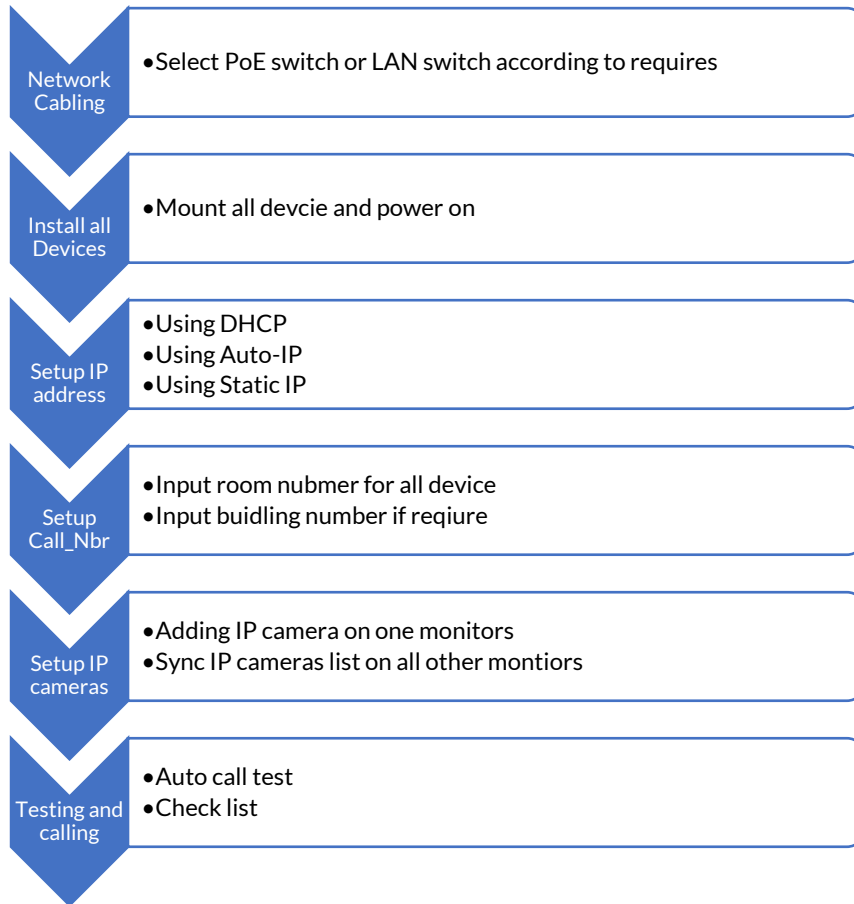
Unlock delay timing.

Other parameters are reserved

Installer Configuration Example

Simplest examples for how to set up a project

A simple guild line for install IX system



Ex1.Single Family

Project for one family install in a villa house

2 x Door station IX610

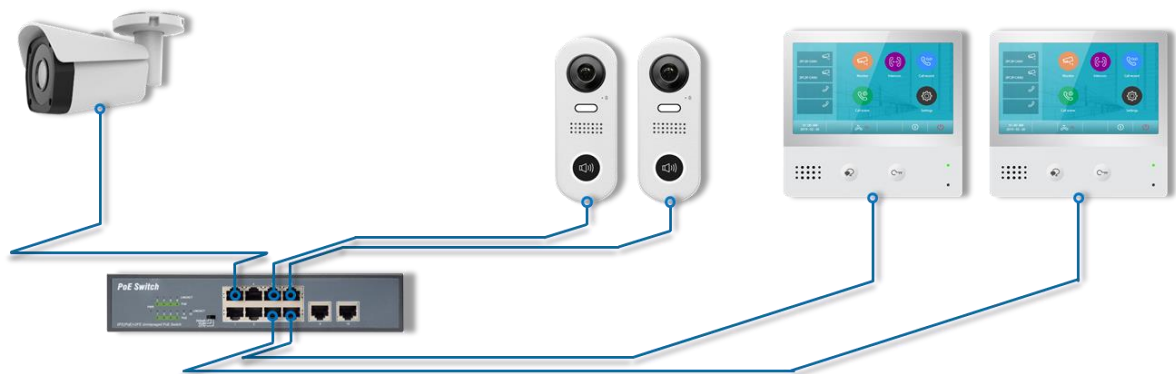
2 x Monitor IX471

Some IP Cameras

All monitors/door stations in default setting or brand new from box.

Using DHCP & Auto-IP

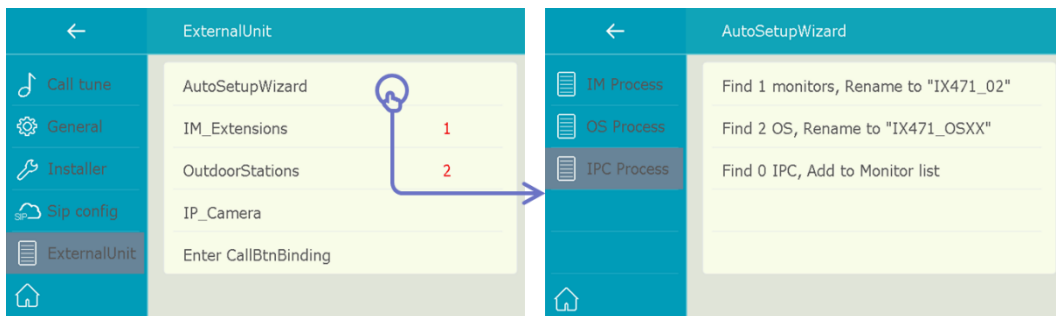
Wiring



Configuration

After all monitor power up and in standby, on one of monitor:

Tap "Settings" -> "ExternalUnit" -> "AutoSetupWizard"



Setup will run automatically, after running all setup for this project is done.

Ex2.Standard Apartment

Project for only 1 building but 2 different apartments.

2 x Door station IX850

4 x Monitor (2 for each apartment)

4 x IX610 (2 for each apartment)

Some cameras.

All monitors/door stations in default setting.

Using DHCP & Auto-IP

Wiring



Configuration

After all monitor power up and in standby,

1. Configure Door stations.

On door station 1:

Into "Installer Mode" and enable "Onsite manage password-free" and "Always in this mode".

And tap "blue bar on the top" -> "Settings" -> "Call_Nbr" -> input "Name" example "Front Door"

On door station 2:

Input "Installer Mode" and tap "blue bar on the top" -> "Settings" -> "Call_Nbr" -> change "DS_Nbr" to 02 -> input "Name" example "Back Door"

2. Configure Monitors

On Room1 monitor1:

Tap "Settings" -> "Installer" -> "Call_Nbr" -> "RM_ADDR" -> "(SS) Standalone Apartment" and input "0001" -> Input "Name" example "Wilbur" -> Input Local_Nbr "101" for IX850 to call.

On Room1 monitor2:

Tap "Settings" -> "Installer" -> "Call_Nbr" -> "RM_ADDR" -> "(SS) Standalone Apartment" and input "0001" -> Input 02 for "MS_Nbr" -> Input Local_Nbr "101" for IX850 to call.

On Room2 monitor1:

Tap "Settings" -> "Installer" -> "Call_Nbr" -> "RM_ADDR" -> "(SS) Standalone Apartment" and input

"0002" -> Input "Name" example "Alan" -> Input Local_Nbr "102" for IX850 to call.

On Room1 monitor2:

Tap "Settings" -> "Installer" -> "Call_Nbr" -> "RM_ADDR" -> "(SS) Standalone Apartment" and input "0002" -> Input 02 for "MS_Nbr" -> Input Local_Nbr "102" for IX850 to call.

3. Configure Outdoor station IX610

On Room1 monitor1:

Tap "Settings" -> "ExternalUnit" -> "Enter CallBtnBinding", and press outdoor station 1 call button for 10s, and press call button to call.

Repeat to add outdoor station 2.

On Room2 monitor1:

Repeat.

4. Configure IP Camera

On all monitor:

Tap "Settings" -> "ExternalUnit" -> "IP_Camera" -> "ADD" -> "Add by search"

5. Exit Installer mode and finish

On door station 1:

Input "Installer Mode" and tap "blue bar on the top" -> "Exit installer mode"

Ex3.Networked System

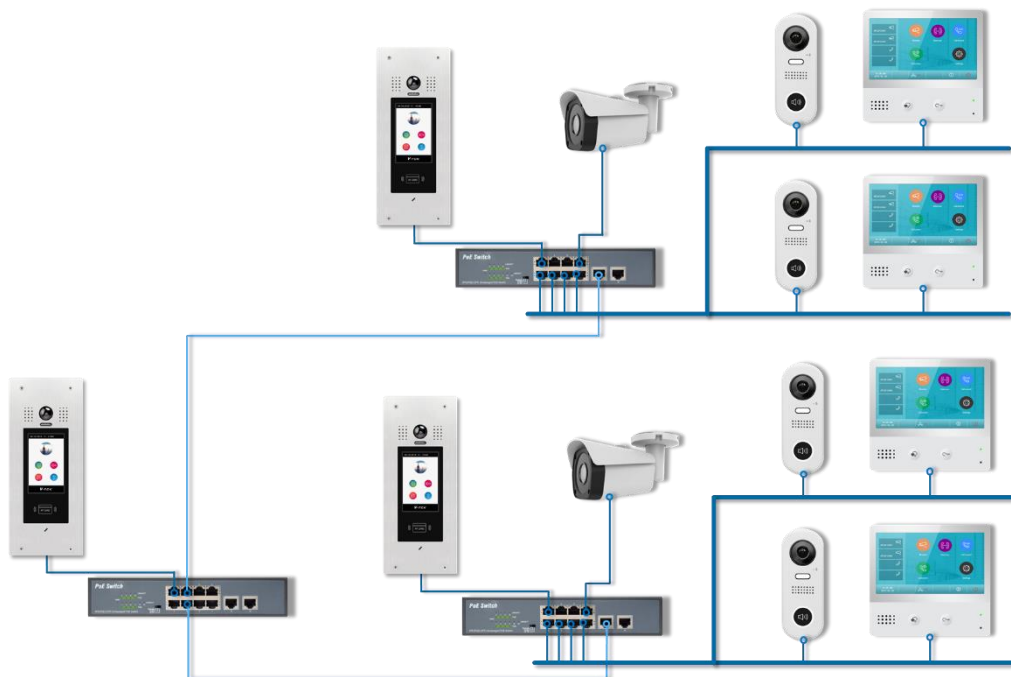
Project for only 1 building but 2 different apartments.

3 x Door station IX850 (1 common door station, each building 1 door station)

4 x Monitor (2 for each building)

4 x IX610 (2 for each apartment)

Wiring



Configuration

After all monitor power up and in standby,

1. Configure Door stations.

On common door station:

Into "Installer Mode" and enable "Onsite manage password-free" and "Always in this mode".

And tap "blue bar on the top" -> "Settings" -> "Call_Nbr" -> setup as below:

BD_Nbr = 0000

DS_Nbr = 01 (Default)

Name = "Gate Door"

On Building1 door station:

Into "Installer Mode" and tap "blue bar on the top" -> "Settings" -> "Call_Nbr" -> setup as below:

BD_Nbr = 0001

DS_Nbr = 01 (Default)

Name = "Build1 Door"

On Building1 door station:

Into "Installer Mode" and tap "blue bar on the top" -> "Settings" -> "Call_Nbr" -> setup as below:

BD_Nbr = 0002

DS_Nbr = 01 (Default)

Name = "Build2 Door"

2. Configure Monitors

On Building1 Room1 monitor:

Tap "Settings" -> "Installer" -> "Call_Nbr" -> Set up as below:

Room_Addr: "(NS) Network System" -> input 00010001

MS_Nbr = 01(default)

Name = "Wilbur"

Global_Nbr = A1 extra call number for common door station to call

Local_Nbr = 101 extra call number for building door station to call

On Building1 Room2 monitor:

Room_Addr: "(NS) Network System" -> input 00010002

MS_Nbr = 01(default)

Name = "Alan"

Global_Nbr = A2 extra call number for common door station to call

Local_Nbr = 102 extra call number for building door station to call

On Building2 Room1 monitor:

Room_Addr: "(NS) Network System" -> input 00020001

MS_Nbr = 01(default)

Name = "Alan"

Global_Nbr = B1 extra call number for common door station to call

Local_Nbr = 201 extra call number for building door station to call

On Building2 Room2 monitor:

Room_Addr: "(NS) Network System" -> input 00020002

MS_Nbr = 01(default)

Name = "Alan"

Global_Nbr = B2 extra call number for common door station to call

Local_Nbr = 202 extra call number for building door station to call

3. Configure Outdoor station IX610

On Building1 Room1 monitor:

Tap "Settings" -> "ExternalUnit" -> "Enter CallBtnBinding", and press outdoor station 1 call button for 10s, and press call button to call.

On all other:

Repeat.

4. Configure IP Camera

On one of monitor in Building1:

Tap "Settings" -> "ExternalUnit" -> "IP_Camera" -> "ADD" -> "Add by search", then tap "Delete" camera that belongs to "Building2", after tap "Sync", and "Sync to server"

On all other monitors in Building1:

Installer Configuration

IX001

Tap “Settings” -> “ExternalUnit” -> “IP_Camera” -> “Sync” -> “Sync from server”.

On Building2:

Repeat.

5. Exit Installer mode and finish

On common door station:

Input “Installer Mode” and tap “blue bar on the top” -> “Exit installer mode”